

# MidTeQ

Powered by Midcosta

## Your sales on Autopilot.



SCAN ME

# Think globally, act Locally

## Midcosta

### **Innovative solutions for renewable energy & smart home**

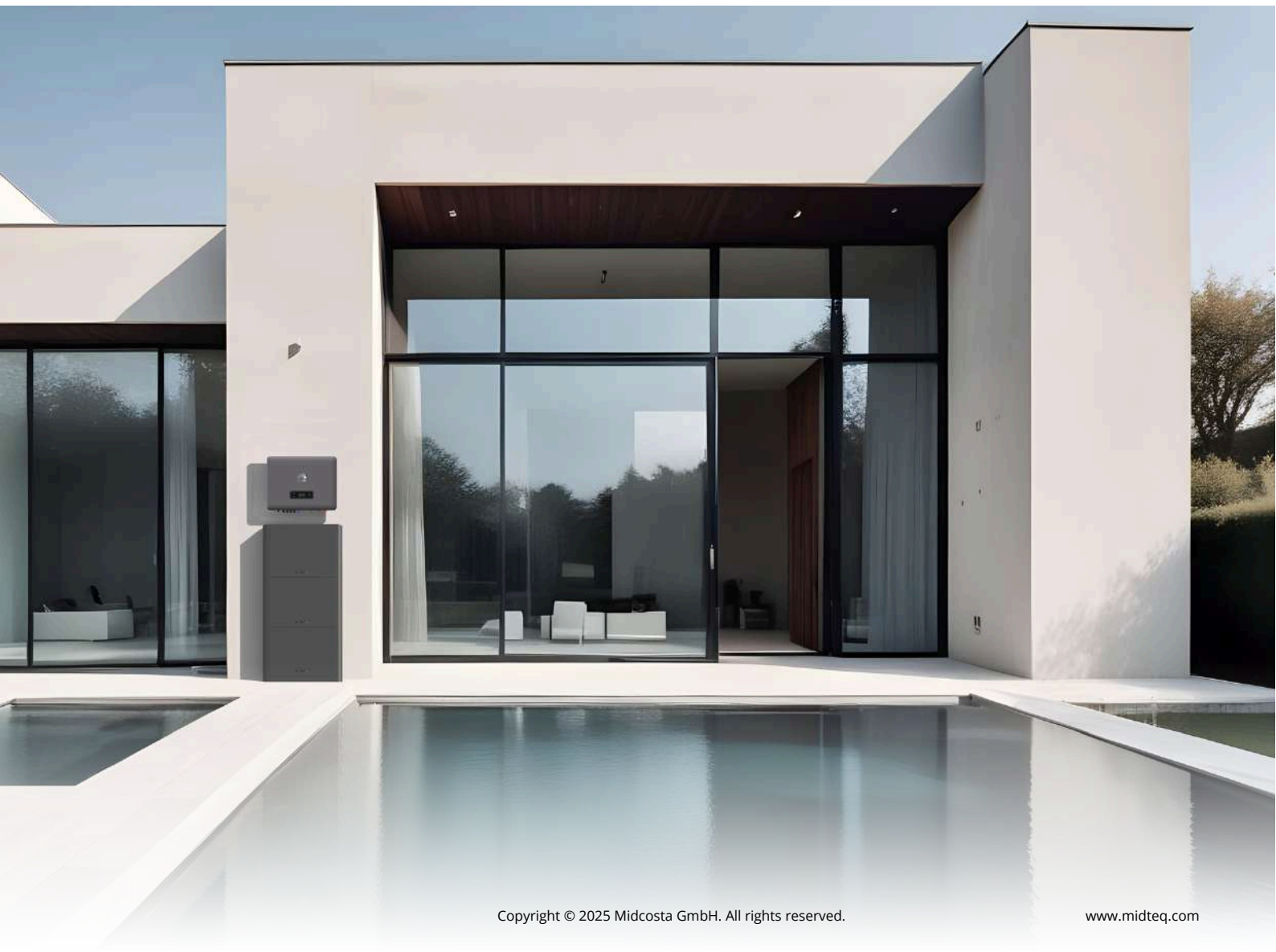
Midcosta combines international experience with locally tailored solutions. Thanks to in-house research and development, pioneering technologies are created that are perfectly aligned with regional needs.

### **Coming in 2025: The future of energy management.**

Our next big step: Heat pump & wallbox – in the same modern design, perfectly integrated into our MidTeQ ecosystem.

With its own Energy Management System (EMS) for maximum efficiency, comfort, and autonomy. Everything controllable via one app – for a smart and sustainable energy future.

Stay tuned!





## PrimePower Hybrid Inverter

MID-H4/5/6/8/10/12K-T

**Up to 12 kW**

Output power

**3-phase**

Supports backup

**98,2%**

Max. Efficiency



### Technological Highlights & Thoughtful Design

- Maximum Efficiency & Performance
- **Low Start Voltage** – Longer Energy Generation & Higher Efficiency
- **150% PV** Oversizing – Optimal Use of the Inverter
- Remote Maintenance & Software Updates – **Five Flexible Operating Modes**
- Premium Design & Quiet Operation
- Star Gray Housing – **High-Quality Finish**
- Whisper Quiet **25 dB** – Nearly Silent Operation
- **OLED Display** – Quick Display of Operating Status
- Lightweight (**26 kg**) – Easy Transport & Installation
- Smart. Efficient. Future-Proof.

Model		MID-H4K-T	MID-H5K-T	MID-H6K-T	MID-H8K-T	MID-H10K-T	MID-H12K-T
PV Input							
Recommended Max. input power	[kWp]	6.0	7.5	9.0	12.0	15.0	18.0
Start-up voltage	[V]	135	135	135	135	135	135
Max. DC input voltage*	[V]	1000*	1000*	1000*	1000*	1000*	1000*
Rated DC input voltage	[V]	620	620	620	620	620	620
MPPT voltage range*	[V]	120-950*	120-950*	120-950*	200-950*	200-950*	200-950*
No. of MPP trackers		2	2	2	2	2	2
No. of DC inputs per MPPT		1/1	1/1	1/1	1/1	1/1	1/1
Max. input current	[A]	15/15	15/15	15/15	15/15	15/15	15/15
Max. short-circuit current	[A]	20/20	20/20	20/20	20/20	20/20	20/20
Battery Side							
Battery type		Lithium Battery (with BMS)					
Battery voltage range	[V]	135-750					
Maximum charging/discharge current	[A]	25/25					
Grid Side							
Rated output power	[kW]	4.0	5.0	6.0	8.0	10.0	12.0
Max. output apparent power	[kVA]	4.4	5.5	6.6	8.8	11.0 1)	13.2
Max. input apparent power**	[kVA]	8.0	10.0	12.0	16.0	16.5	16.5
Max. charging power of battery	[kW]	4.0	5.0	6.0	8.0	8.0	12.0
Rated AC voltage		3L/N/PE; 220/380V;230/400V;240/415V					
Rated AC frequency	[Hz]	50/60	50/60	50/60	50/60	50/60	50/60
Max. output current	[A]	6.7	8.3	10.0	13.3	16.5 2)	20.0
Power factor		0.8 leading ...0.8 lagging					
Max. total harmonic distortion		<3% @Rated output power					
DCI		<0.5%In	<0.5%In	<0.5%In	<0.5%In	<0.5%In	<0.5%In
Back-up Side							
Rated output power	[kW]	4.0	5.0	6.0	8.0	10.0	12.0
Max. output apparent power	[kVA]	4.4	5.5	6.6	8.8	11.0	13.2
Max. output current	[A]	6.7	8.3	10.0	13.3	16.5	20.0
UPS switching time		<10ms	<10ms	<10ms	<10ms	<10ms	<10ms
Rated output voltage		3L/N/PE; 220/380V;230/400V;240/415V					
Rated output frequency	[Hz]	50/60	50/60	50/60	50/60	50/60	50/60
Voltage harmonic distortion		<3% @Linear load					
Efficiency							
Max. efficiency		98.1%	98.1%	98.1%	98.2%	98.2%	98.2%
European efficiency		97.3%	97.3%	97.3%	97.4%	97.4%	97.4%
Protection							
DC reverse polarity protection		Integrated					
Battery input reverse connection protection		Integrated					
Insulation resistance protection		Integrated					
Surge protection		Integrated					
Over-temperature protection		Integrated					
Residual current protection		Integrated					
Islanding protection		Integrated					
AC over-voltage protection		Integrated					
Overload protection		Integrated					
AC short-circuit protection		Integrated					
Over voltage category		PV: II Main: III					
General Data							
Dimensions	[W×H×D mm]	534×418×210					
Weight	[KG]	26.0					
Protection degree		IP65					
Standby self-consumption	[W]	<15					
Topology		Transformerless					
Operating Temperature Range	[°C]	-30~+60					
Relative Humidity	[%]	0~100					
Operating Altitude	[m]	3000 (>3000m derating)					
Cooling		Natural Convection					
Noise Level	[dB]	<25					
Display		OLED & LED					
Communication		CAN, RS485, WiFi/LAN (Optional)					
Certificates(more available upon request)							
IEC 61000 (CE EMC), IEC 62109 (CE LVD), EN IEC 62477-1 (CE LVD), EN 50549-1,VDE AR-N4105, VDE AR-N4110 , C10/11, TOR Erzeuger, IEC 62116							

\* For 1000 PV System, max. Input voltage is 950V without battery, 850V with battery, otherwise inverter will be on standby;

\*\* The maximum power drawn from the utility grid to meet the backup load requirements and charge the battery.

## PrimePower Battery

MID-HV10/15/25/30

**Up to 75 kWh**

Extended capacity

**6 000+\***

Lifecycle

**IP65**

Weatherproof

**LFP**

Battery

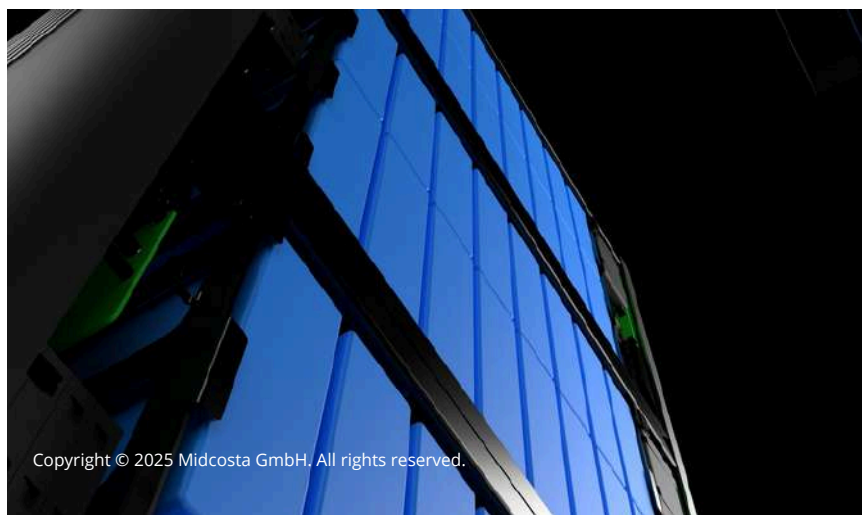
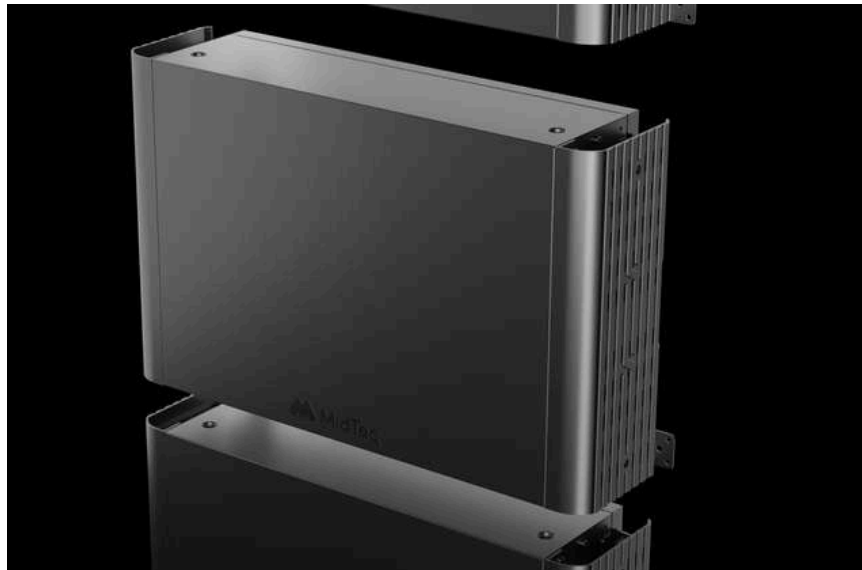







- **Modern & Eye-Catching**
  - Timeless design – Stylish & perfectly suited to any environment
  - Modern color scheme – A real eye-catcher
- **Smart Compatibility**
  - Compatible with both old & new batteries – Save costs when upgrading
- **Future-Proof & Scalable**
  - Expandable up to **75 kWh** – Flexible and adaptable to growing needs
- **Reliable energy without interruption**
- **Multi-parallel design** – Continuous operation even if one battery fails
- **Weatherproof & Durable**
- **IP65** protection – Resistant to rain, dust, and extreme conditions
- **Maximum safety & Efficiency**
  - Integrated **BMS & DCDC** module – Optimal performance and longevity thanks to the integrated BMS in each module



## Maximum Safety & Performance – Intelligent BMS

- Each battery pack is equipped with an independent BMS that optimizes performance and maximizes protection. The integrated fire protection module ensures the highest safety, so you can always rely on a reliable and long-lasting energy source.  
Efficient. Safe. Future-proof.



Model	MID-HV10	MID-HV15	MID-HV20	MID-HV25	MID-HV30
System Demo					
					
Module Number	2	3	4	5	6
Energy Capacity	10kWh	15kWh	20kWh	25kWh	30kWh
Nominal Power	6kW	9kW	12kW	15kW	18kW
Peak Output Power	8kW	12kW	16kW	20kW	24kW
Dimension:W*D*H (mm)	674*170*840	674*170*840	674*170*840 674*170*840	674*170*840 674*170*12600	674*170*12600 674*170*12600
Weight (kg)	110	165	220	275	330
Electric Parameter					
Battery type	Lithium Battery (with BMS)				
Nominal Voltage	400V				
Operating Voltage Range	350~435V				
Output Current	7.5A				
Ingress Protection	IP65				
Installation	Wall-mounted or Floor installation*1 (Floor installation requires extra base) (W/D/H=674/170/50mm)				
Operating Ambient Temperature	- 20°C~ +55°C				
Relative Humidity	5%~95%				
Cooling	Natural				
Altitude	≤4000m				
DOD	90%				
Communication Port	CAN/RS485				
Service Life					
Cycle Life	>6000 cycle				
Certification					
Safety & Certification	IEC62619(Cell&Pack), IEC62477,,IEC61000,CE, UL1973, UL9540A				
Transportation	UN38.3, ROHS, REACH.				



# Global but Local

## Germany

### Midcosta GmbH

Einsteinstraße 174, 81677 München

## Slovakia

### Midcosta s.r.o.

Priemyselná 8E, 91701 Trnava

## China

### Midcosta China

Xinqiao Street, 518104 Shenzhen City

[www.midcosta.com](http://www.midcosta.com)

[info@midcosta.com](mailto:info@midcosta.com)



SCAN ME

